


Pot Divider



MULTIPLY PLANT COUNT WITHOUT INCREASING SYSTEM SIZE

PERFECT FOR PRE-VEG STAGE & TIGHT-LEAVED VARIETIES

ALLOWS EACH POT TO HOLD FOUR PLANTS



POTDIVIDER 8.5 FITS 8.5L POTS AS USED IN EASY2GROW MODULES >>



POTDIVIDER 8.5 FITS 8.5L POTS AS USED IN AUTO8 MODULES >>



POTDIVIDER 15 FITS 15L POTS AS USED IN 1POT, EASY2GROW AND AUTO8 MODULES (1POT MODULE PICTURED ABOVE) >>



Applicable to UK / RoW excl. USA and Canada

POTDIVIDER 8.5 (8.5L POTS)



POTDIVIDER 15 (15L POTS)



 @AUTOPOT_GLOBAL

 @AUTOPOTSYSTEMS



 AUTOPOT.CO.UK

 @AUTOPOTUK



POTDIVIDER BASE REMOVES THE NEED FOR PEBBLE BASE LAYER

LIFTS OUT CLEANLY BRINGING PLANTS WITH IT - FOR EASY REPOTTING

FITS 8.5 L POTS OR 15 L POTS - AS USED IN EASY2GROW, 1POT & AUTO8

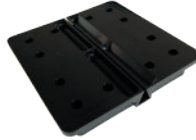
COMPATIBILITY:

- PotDivider 8.5 - AutoPot 8.5 L Pots
- PotDivider 15 - AutoPot 15 L Pots

THESE POTS AS USED IN:

- easy2grow Modules
- Auto8 Modules
- 1Pot Modules

CONTENTS:



1x PotDivider Base



1x Bottom Divider



1x Top Divider



1

Prepare your pots with root control as usual.
Put marix or root control discs (not supplied) into your 8.5L or 15 L pot (not supplied).



2

To assemble PotDivider take the Bottom Divider (see Contents above) and slide into the guide on the Base.



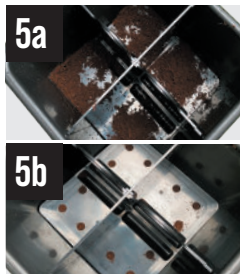
3

Take the Top Divider (see Contents above) and slot down into the slot in the Bottom Divider using the guides to create a cross-shape.



4

Place the assembled PotDivider into your 8.5 L or 15 L pot.



5a

Pour a small amount of grow media into each section of the PotDivider (5a).

5b

Ensure there is grow media in holes in the Base (5b) - **this is essential for capillary action to occur.**



6

Fill pots with medium and pot up plants. Water through pots and allow to drain outside the tray.
Once drained place pots into your module trays.