

### Ensuring that the AQUAvalve floods and drains correctly

- 1** Making sure your AQUAvalve floods and drains correctly is simply achieved and only takes a few seconds.
- 2** Hold the AQUAvalve at eye level so that you can see the silicon fitted to the top float resting on the hole below it.
- 3** The silicon must create a tight seal when touching the hole.
- 4** If it looks like it is not sitting parallel on the hole below, simply lift the top float and apply pressure to one side of the silicon, drop the float and hold at eye level again. Repeat the procedure if necessary.

### Care and maintenance

- 1** At the end of your growing season, clean the AQUAvalve using warm soapy water. Using an old tooth brush will help.  
  
The AQUAvalve is easily disassembled. The top float will slide all the way across and the bottom float is unclipped from its pivoting position. The circular discs fitted to the top float can also be removed by using pliers to grip the raised point.
- 2** It is also handy to have a paper clip or pipe cleaner to hand so that you can push it through the AQUAvalve nozzle, this will remove any lime scale build up that may have occurred during the growing season.  
  
Blowing through the AQUAvalve nozzle will also help to remove any build up. Do not under any circumstances use a drill & drill bit to clear the AQUAvalve nozzle.

**This will potentially damage the AQUAvalve beyond repair.**

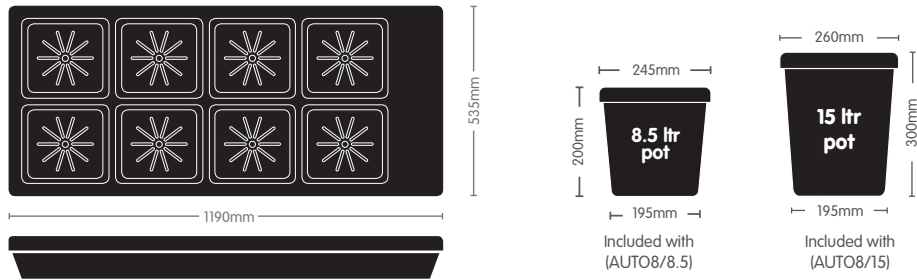
## Your Auto8 Set-up Guidelines



## Auto8 contents

- 1x Auto8 tray
- 1x Auto8 lid
- 1x Round blue access cover
- 1x AQUAvalve
- 1x AQUAvalve cover
- 1x 6mm top hat grommet
- 1x metre 6mm piping
- 8x Marix disc (square)
- 8x PotSock Square
- 8x 8.5 ltr pot (if AUTO8/8.5)
- 8x 15 ltr pot (if AUTO8/15)

## Pot and Tray Dimensions



## Required Reservoir Capacity



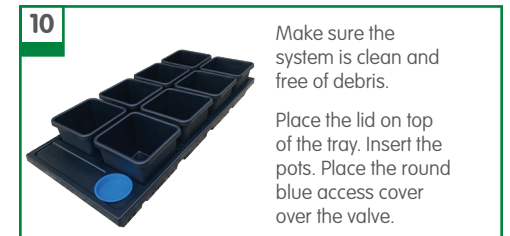
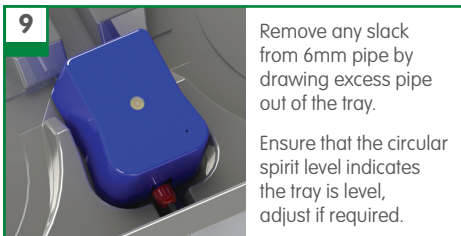
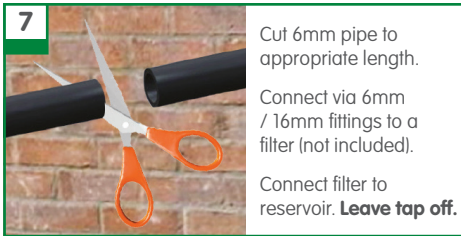
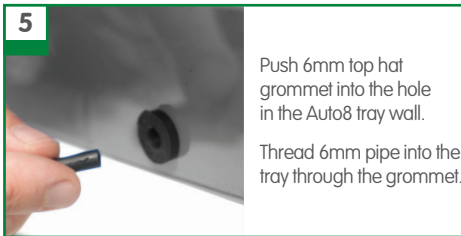
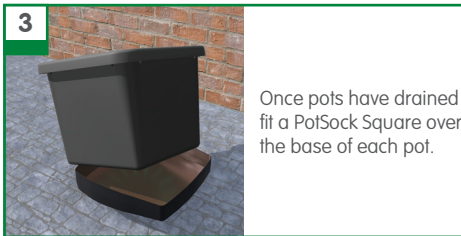
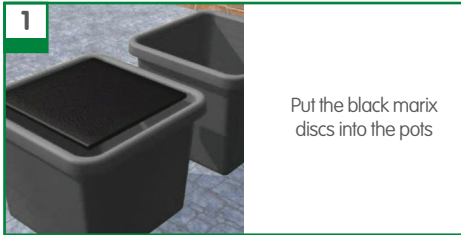
FlexiTank and FlexiTank Pro are the only collapsible reservoirs that AutoPot recommend for use with Auto8 Tray Systems. A minimum 100ltr reservoir is required per unit.

| Auto8 System Size                   | 1x Auto8               | 2x Auto8               | 4x Auto8               | 8x Auto8         | 10x Auto8         |
|-------------------------------------|------------------------|------------------------|------------------------|------------------|-------------------|
| FlexiTank or FlexiTank Pro Capacity | FlexiTank / Pro 100ltr | FlexiTank / Pro 225ltr | FlexiTank / Pro 400ltr | FlexiTank 750ltr | FlexiTank 1000ltr |

### Advice

- Pot up your plants, water through, then allow your plants to establish in the pots for a period of 7 to 10 days before turning your system on. This will encourage a stronger and healthier root system.
- Always raise your reservoir to a minimum of 150mm above the highest AQUAvalve and re-fill the reservoir when there is approximately a 1/3 of the solution left - **NEVER ALLOW THE RESERVOIR TO RUN EMPTY.**
- For best results, we recommend mineral fertilisers. Do not use liquid organic fertilisers, as they have a tendency to block small pipe work.
- Clean all substrate from the bottom and sides of the pots before placing in each tray. This will ensure your system is clean from the start.
- Always use free draining substrates, for example: soil/perlite, coco/perlite, soil/clay pebbles, coco/clay pebbles, rockwool/clay pebbles.

## Auto8 Setup



**Allow your plants to establish for 7-10 days before turning system on**

### Advice